

Long Distance Dual Sensor PTZ Thermal Camera

EMSTV Series Long Range Multi Sensor Thermal Camera is a series of camera specially designed for special purposes, the Camera adopts 4MP visible camera and 640*512 uncooled thermal camera.

In combination with 360-degree PT, the camera is capable of conducting 24 hours real-time monitoring within 1km-18km.

With built-in technical grade control electronic system, the camera's functions like zooming, focusing and video switch can be easily completed. The camera is IP67 rates, which ensures camera's normal operation under tough weather conditions.



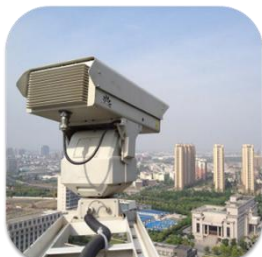
Feature



- 1.330-1100mm full HD visible camera, 4 mega pixels CCD, 1-20km detection range in the daytime.
- 2.155-300mm zoom lens thermal camera, 640*512 resolution, 20km detection range at day/night.
- 3.25mk NETD produces crisp thermal image under all weather conditions.
- 4.Fog penetration (optional), optical filtering and DSP image processing.
- 5.PT with 50kg load duty and 360 degree rotation.
- 6.IP67 ingress protection ensures camera's proper functioning under tough weather conditions.

Application

Border/Costal defense, harbor, oil field, river lane, airport, safe city



Auto Track



Intrusion Detection



High Resolution



Ranging Scale

Technical specification

Model	EMSTV7627-3261LFZ
Detection	Vehicle: 13.4km;Human:4.8 km
Recognition	Vehicle:3.4km; Human:1.3km
Thermal Camera System	
Detector	6th Generation Uncooled VOX sensor
Wave length	8~14μm, LWIR
Pixel size	12μm
Detector Resolution	640*512 resolution
NETD	25mk
Lens Control	Auto/Manual
Image Enhancement	SDE digital image enhancement technology
Pseudo-color polarity	More than 18 kinds of pseudo-color images, hot black/hot white
Image Parameters	AGC automatic gain control, brightness, contrast
Digital Zoom	1X~8X continuous digital zoom(step 0.1), support ROI zoom, support PIP function
Range ruler	Support range ruler/ range scale
Dead pixel correction	Support the dead pixel correction function
Image correction	Support manual correction, background correction, and so on
Non-conformity correction	Support, manual/auto
Strong light protection	Support Anti-Sun damage, anti sunburn
Temperature measurement	supports the highest and lowest temperature measurements in thermal video screen
Focal length	31mm~155mm
	5X optical continuous zoom, auto focus
Daylight Camera System	
Focal Length	8~500mm
Zoom	62X optical zoom
Sensor	ultra-low illumination starlight CMOS, 4MP resolution
Low Illumination	Minimum illumination: color: 0.0005Lux @ black and white: 0.0001Lux @ 0Lux (IRON)
Image process	white balance, electronic shutter, frame accumulation, backlight compensation, glare suppression, 2D/3D digital noise reduction, electronic anti-shake, wide dynamic
Defog	Support electronic fog penetration and optical fog penetration
Video/Audio	
Thermal	support 1920×1080; 1280×1024; 1280×960; 1024×768; 1280×720; 704×576; 640×512; 640×480; 400×300; 384×288; 352×288; 352×240
Daylight	Support 2688*1520;2592×1520; 2560×1440; 1920×1080; 1280×1024; 1280×960; 1024×768; 1280×720; 704×576; 640×512; 640×480; 400×300; 384×288; 352×288; 352×240
Video encoding	H.265/H.264/MJPEG, multi-stream support
Video rate	32Kbps~16Mbps
Audio encoding	G.711A/ G.711U/G726
OSD settings:	Support OSD display settings for channel name, time, field of view, focal length, and preset bit name settings
Intelligent Function	
Fire Detection Alarm	Threshold 255 levels, target size, number of targets 1-16 can be set, automatically select the most prominent target display, hot spot tracking
Intelligent Analysis	Support intrusion detection, boundary crossing detection, entering/leaving area detection, motion detection, wandering detection, people gathering, fast moving, target tracking, items left behind,

	items taken; people/vehicle target detection; and support 16 area settings; support intrusion detection people, vehicle filtering function; support target temperature filtering function
Auto Track	Support single scene tracking/support multi-scene tracking/support panoramic tracking/support alarm linkage tracking
Intelligent fusion	Support 512 AR intelligent information fusion, support fire point, intelligent analysis of the recording logo information fusion, support orientation angle, field of view angle, focal length, multiplier information fusion
Alarm management	support for alarm capture and upload
Map	Support map integration
Weather Information	Support weather information integration
Classification identification	Support Car/Ship/Human/Drones classification identification
Smoke/Fire identification	Support
Enhancement Features	
Distance measurement	Support passive distance measurement; support optional laser distance measurement.
Whole life management	Health index record function, support working time, shutter count, working temperature, limit temperature, etc.; zoom lens and head each motor working cumulative time, etc.
Scene mode	Support multi-configuration scene, adapt to different environment applications
Power failure memory	Support can restore the position before power failure, preset point state, cruise state, line sweep state.
Remote maintenance	With fault query, self-test, remote restart function; online upgrade, remote upgrade.
Web access	support WEB full function configuration, remote online upgrade.
Housing	
Material	High strength aluminum alloy shell, waterproof seal, To avoid the growth of mold and moisture generated
Surface coating	PTA three-resistance coating, Seawater corrosion resistance
Special Design	Built-in thermostat, design of thermal equilibrium
Interface	Interface: military aviation waterproof plug
PTZ	
Load capacity	50kg
Rotation	Pan: N*360°, Tilt: +45°~-45°
Speed	Speed: Pan: 0.01~30°/S, Tilt: 0.01~15°/S
Preset	Preset: 3000, with Petrol/scan function, Azimuth real-time display, Zero correction function
Interface	RJ45 Interface
Video format	H.264, Dual video output
Others	
Protocol	TCP/IP、HTTP、DHCP、DNS、DDNS、RTP ect. Other protocol
	Support ONVIF2.0
	Pelco-P、Pelco-D, Baudrate 2400、4800、9600、19200 optional
Power supply	AC24V/DC24V±10%, 50Hz, 150W, Standard AC220V->AC24V power supply (Optional DC12V)
Environment	1. Operating temperature: -25℃~+60℃ (-40℃ optional); Storage temperature: -35℃~+65℃
	2. Humidity: <90%
	3. Anti-lighting: built-in auto Fuse-protected device, Power 6000V, Signal 2000V
	4. Ingress protection: IP67

Detection


Recognition

Identification


All detection and recognition should according to the following industry standards

Human


Vehicle




3.6 pixels by 1 pixel
(Something is there)
1.5 pixels / 0.75m = 2 pixels per meter




13 pixels by 5 pixels
(A person is there)
6 pixels / 0.75m = 8 pixels per meter




28.8 pixels by 8 pixels
(The person looks like a soldier)
12 pixels / 0.75m = 16 pixels per meter



2.8 pixels by 1 pixel
(Something is there)
1.5 pixels / 0.75m = 2 pixels per meter



13 pixels by 5 pixels
(A vehicle is there)
6 pixels / 0.75m = 8 pixels per meter



28.8 pixels by 8 pixels
(The vehicle may be a humvee)
12 pixels / 0.75m = 16 pixels per meter