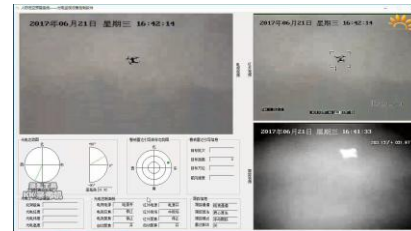


DMA Long Range Multi-Sensor Optical Platform Camera

The DMA series multi-sensor optical platform camera is independently researched and developed by our company. It is specially designed for the key areas surveillance such as conference centers, office buildings, prisons, airports, military bases, nuclear, biological and chemical industries, border and coastal defenses. The Optical platform camera system integrated multi-spectrum detection modules such as high-definition visible light camera, full HD uncooled thermal imager, near-infrared laser illumination, etc., and can be equipped with laser range finder, electronic compass, automatic tracking, intelligent analysis, etc. The module realizes the functions of all-weather and all-time full-dimensional discovery, positioning, tracking, identification and tracking of targets, and the operating distance can reach more than 20km. The optical platform camera system can be fixedly erected or used in vehicles. It adopts military quality design, and the overall shell is made of super cast aluminum material, and the protection level reaches IP66/IP67, which effectively ensures the long-term stable operation of the equipment in the harsh field.



The optical platform camera system can also cooperate with radar equipment, passive spectrum detection equipment, radio interference equipment, etc. to form an automatic UAV defense system to realize early detection, fast locking, stable tracking, quasi-recognition and strong countermeasures of UAVs. Effectively ensure low-altitude safety in key areas day and night, all-weather

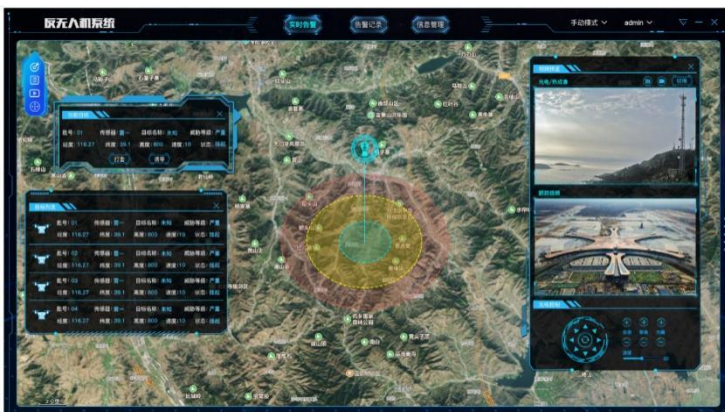


Feature

1. Proper functioning in severe environment: reinforced aluminum alloy housing.
2. Wide coverage: azimuth rotation range $0^{\circ} \sim 360^{\circ}$, pitch rotation range $-90^{\circ} \sim +90^{\circ}$, realizing no dead angle detection and full-dimensional coverage
3. Fast turning speed: The turning speed can reach $80^{\circ}/s$, the acceleration can reach $100^{\circ}/s^2$, it starts and stops quickly, and runs smoothly, which is helpful for capturing and tracking fast moving targets;
4. High control accuracy: using precision angle encoder and high-precision closed-loop servo control system, positioning accuracy can reach 0.01° , high-performance image processing unit with high-precision focus control mechanism to achieve precise automatic focusing;
5. Excellent tracking performance: The automatic tracking module designed with a variety of advanced target acquisition algorithms and tracking algorithms, supplemented by high-precision servo control, tracking accuracy can reach $\pm 0.5mrad$, to ensure stable tracking of the target during fast flight and change of direction
6. High degree of intelligence: With self-developed background management software, it can easily realize functions such as hot spot alarm, regional intrusion alarm, cross-border intrusion alarm, target tracking, long-distance small target recognition, radar linkage, panoramic stitching, 3D zoom positioning, etc. Greatly improve the unmanned, automated and informatized level of the system;
7. Multiple redundant protection: internal temperature monitoring, directional industrial defroster, improve the reliability of the system
8. Strong environmental adaptability: high-strength cast aluminum material, sprayed with three-proof paint, IP66 protection, rainproof, dustproof, anti-corrosion, anti-electromagnetic interference, suitable for various harsh environments

Application

Mainly used in anti-UAV control, low-altitude air defense, military base security monitoring, airport monitoring, oil field and oil depot security.



Technical specification

Model	EMSDMA72141-3186LFZ-3IR
Detection	Vehicle: 20km, Human: 8km
Identification	Vehicle:6km, Human: 2.6km
Thermal Camera System	
Thermal sensor	Uncooled Vox sensor
Resolution	640*512
Wave length	8~14 μ m
NETD	40mK (@25℃ F1.0)
Lens	30mm~300mm, 10X optical zoom, 8X continuous digital zoom
Lens control	Manual /Auto focus
Image enhancement	SDE digital image enhancement technology
Pseudo color	16 kinds of pseudo color, hot-black /hot-white
Image	AGC/Brightness/Contrast
Range ruler	Support range ruler to measurement distance
Correction	Shutter/Background
Anti-Sunburn	Support
Daylight Camera System	
CMOS	High sensitive star light CMOS
Illumination	Color: 0.0005Lux; Black/White: 0.0001 Lux
Focal length	12.5~775mm full HD lens, 62X zoom, auto focus
Image	Support white balance, electronic shutter, backlight compensation, strong light suppression, 2D/3D digital noise reduction, electronic image stabilization,WDR
Defog	Support
Laser range finder	
Distance	1.5km for drones
Accuracy	± 1m
Audio/Video	
Thermal Resolution	support 1920×1080; 1280×1024; 1280×960; 1024×768; 1280×720; 704×576; 640×512; 640×480; 400×300; 384×288; 352×288; 352×240
Visible Resolution	2592×1520; 2560×1440; 1920×1080; 1280×1024; 1280×960; 1024×768; 1280×720; 704×576; 640×512; 640×480; 400×300; 384×288; 352×288; 352×240
Video	H.265/H.264/MJPEG, multi-stream support
Video bit rate	32Kbps~16Mbps
OSD Setting	Support OSD display settings for channel name, time, gimbal orientation, field of view, focal length, and preset bit name settings
Fire/Smoke Alarm	
Alarm Threshold	255 level can be adjustable
Target	Adjustable, auto recognize different object
Alarm Mode	Video display and Sound alarm
Intelligent Function	
Intelligent Analytic	support intrusion detection, boundary crossing detection, entering/leaving area detection, motion detection, wandering detection, people gathering, fast moving, target tracking, items left behind, items taken; people/vehicle target detection, face detection; and support 16 area settings; support intrusion detection people, vehicle filtering filtering function;
Auto Track	support single scene tracking/support multi-scene tracking/support panoramic tracking/support

	alarm linkage tracking
Image fusion	Support
Distance measurement	By range ruler
Anti-Sunburn	Support
Remote maintenance	Support
Web access	Support
Life-time management	Support
Pan tilt	
Structure	U shape
Separate design	Windows: Two windows design
Rotation	N*360, ± 90
Speed	Horizontal: $0.01 \sim 80^\circ /s$; Vertical: $0.01 \sim 60^\circ /s$
Acceleration	Horizontal: $100^\circ /s$; Vertical: $100^\circ /s$
Positioning Accuracy	0.01°
Positioning Accuracy	$< 4s$
Zero Point Settings	Support zero point settings for horizontal and vertical
Preset	No less than 255
Interface	
Interface	RJ45 network interface
Protocol	Support HTTP, HTTPS, FTP, SMTP, DNS, NTP, RTSP, RTCP, RTP, TCP, UDP, ICMP, DHCP, ONVIF, GB28181
SDK	Support
Others	
Power Supply	AC90V~305V power adapter
Power consumption	Normal: 150W; Peak: 500W
Working temperature	$-40^\circ C \sim +60^\circ C$
Storage temperature	$-45^\circ C \sim +70^\circ C$
Humidity	$< 90\%RH$
Lightning protection	Support, interface circuit has built-in surge protection, 6000V
Anti-salt spray	Support